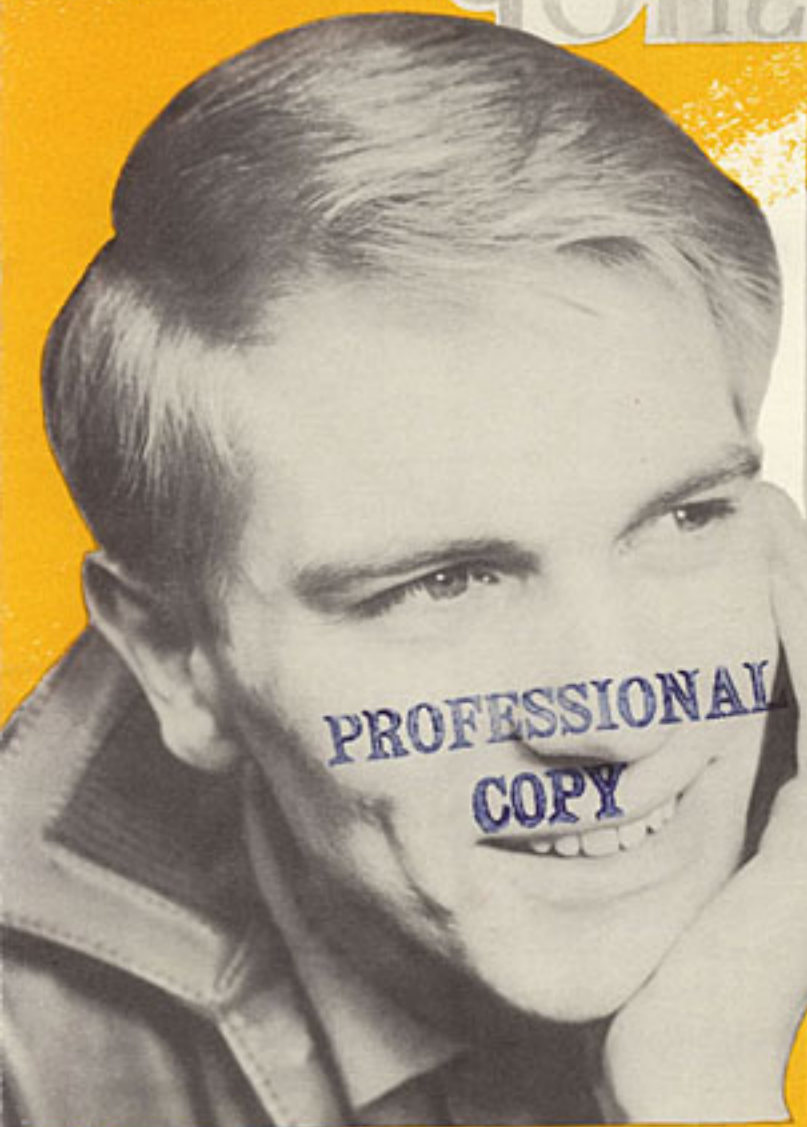


Friends - 50

Lonely Pup

(IN A CHRISTMAS SHOP)

Words & Music by
ARCHIE ALEXANDER



Recorded by **ADAM FAITH**
PARLOPHONE R.4708

2/-

MILLS MUSIC LTD · MILLS HOUSE · DENMARK STREET W C 2

LONELY PUP (IN A CHRISTMAS SHOP)

ARCHIE ALEXANDER

Moderato

The piano introduction consists of two staves. The right hand plays a series of chords in the treble clef, while the left hand plays a steady eighth-note accompaniment in the bass clef. The tempo is marked 'Moderato' and the dynamics are 'mf'. The key signature has two flats (Bb and Eb).

Doh Eb CHORUS

|| s, :d | d :m | l :s | s :- | l :s | s :m | s :f | f :- |

Soft brown eyes that seem to say "Stay a - while, I want to play,

The piano accompaniment for the first line of the chorus features a melody in the right hand and a bass line in the left hand. Chords Eb, Eo, Fm7, and Bb7 are indicated below the bass line.

|| s, :t, | t, :r | s :f | f :s .l | t :l | s :f .f | m :r | d : |

would you, could you, do, please stop!" He's a LONE-LY PUP IN A CHRIST-MAS SHOP,

The piano accompaniment for the second line of the chorus continues the melody and accompaniment. Chords Bb7, F7, Bb7, and Eb are indicated below the bass line.

|| s, :d | d :m | l :s | s :s .s | l :s | s :m | s :f | f :- |

Thank you, la - dy, thank you, sir, is there some-one else that you'd pre - fer?

The piano accompaniment for the third line of the chorus concludes the melody and accompaniment. Chords Eb, Eo, and Fm7 are indicated below the bass line.

Not for commercial use - adamfaith.org.uk

|| s, :t, it, :r | s :f if :s .1 | t :l | s :f.f | m :r | d : | : | :

He's not sel-fish, just a flop 'tho' he wags his tail in a Christ-mas shop.

Bb7

F7 Bb7 Eb

|| : | : | d :f if :l | l :s | d' :- | t :l | s :f | l :s | m :- |

Mis-ter San-ta, if you would, send him some-one, oh, so good,

Eb7

Ab

Eb

Gbo

Bb7

Eb

Eb7

|| d :f if :l | l :s | d' :-d' | t :r | l :r | s :- | - : | s, :d | d :m |

some-one who will take him home for ev-ry-one to see.

Christ-mas-time, a

mf

Ab

Eb

Ebm

Bb

F7

Bb7

Eb

|| l :s | s :- | l :s | s :m | s :f | f :- | s, :t, it, :r | s :f | f :s .1 |

Christ-mas tree, with a hap-py fam-i-ly,

pi-ty him he's got no "Pop," he's a

Fm7

Bb7

Bb

|| t :l | s :f.f | m :r | d : || 2 :l | s :f.f | m :r : | d : | : | :

LONELY PUP IN A CHRISTMAS SHOP. LONELY PUP IN A CHRISTMAS SHOP.

F9

Bb7

Eb

M.M. 788

F9

Bb7

Eb

Not for commercial use - see info@faith.org.uk

LONELY PUP

(IN A CHRISTMAS SHOP)

ARCHIE ALEXANDER

Moderato

The piano introduction consists of five measures. The right hand plays a rhythmic pattern of eighth notes, while the left hand plays a simple bass line. The tempo is marked 'Moderato'. Dynamics include *mf* and *rall.*. Chords are indicated as Bb7, F9, Bb7, Eb, and F9. A double bar line with a star symbol follows the fifth measure.

VERSE *colla voce*

||t :l |s :f | m :r |d :d' | t :l |s :f | m :- | - :d' |

Christ-mas-time will soon be here, and in a shop I see the

The first line of the verse features a vocal melody with lyrics and piano accompaniment. The piano part consists of block chords in the right hand and a simple bass line in the left hand. Chords are Bb7, Eb, Bb7, and Eb.

To Chorus

a tempo

||t :l |s :f | m :r |d :m | r :r |e :fe | s :- | - :

cut-est lit-tle LONE-LY PUP look sad-ly up at me.

The second line of the verse continues the vocal melody and piano accompaniment. The piano part includes chords Bb7, Eb, Cm7, F7, and Bb. A watermark 'Not for commercial use - adamfaith.org.uk' is visible across the bottom of the page.